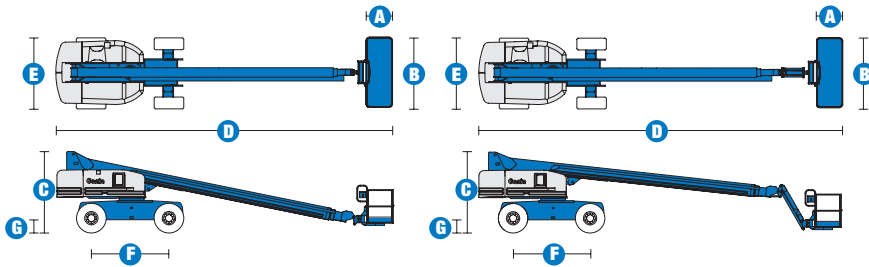


# Specifications



| MODELS                                | S™-80   |            | S™-85   |            |
|---------------------------------------|---------|------------|---------|------------|
|                                       | Metric  | US         | Metric  | US         |
| Working height max*                   | 26.40 m | 86 ft      | 27.90 m | 91 ft      |
| Platform height max                   | 24.40 m | 80 ft      | 25.90 m | 85 ft      |
| Horizontal reach max                  | 22.07 m | 72 ft 5 in | 23.60 m | 77 ft 5 in |
| Below ground reach                    | 3.05 m  | 10 ft      | 4.19 m  | 13 ft 9 in |
| <b>A</b> Platform length - 6 ft model | 76 cm   | 2 ft 6 in  | 76 cm   | 2 ft 6 in  |
| Platform length - 8 ft model          | 91 cm   | 3 ft       | 91 cm   | 3 ft       |
| <b>B</b> Platform width - 6 ft model  | 1.83 m  | 6 ft       | 1.83 m  | 6 ft       |
| Platform width - 8 ft model           | 2.44 m  | 8 ft       | 2.44 m  | 8 ft       |
| <b>C</b> Height - stowed              | 2.80 m  | 9 ft 2 in  | 2.80 m  | 9 ft 2 in  |
| <b>D</b> Length - stowed              | 11.35 m | 37 ft 3 in | 12.37 m | 40 ft 7 in |
| Length - transport (jib tucked under) |         |            | 10.67 m | 35 ft      |
| <b>E</b> Width - axles retracted      | 2.44 m  | 8 ft       | 2.44 m  | 8 ft       |
| Width - axles extended                | 3.07 m  | 10 ft 1 in | 3.07 m  | 10 ft 1 in |
| <b>F</b> Wheelbase                    | 2.74 m  | 9 ft       | 2.74 m  | 9 ft       |
| <b>G</b> Ground clearance - centre    | 43 cm   | 1 ft 5 in  | 43 cm   | 1 ft 5 in  |

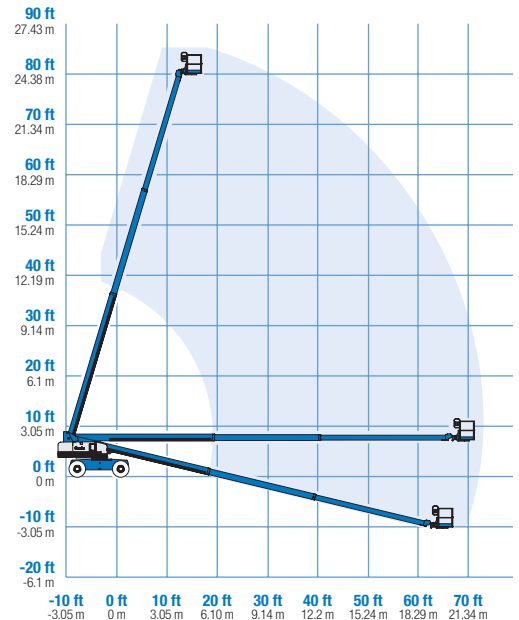
| PRODUCTIVITY                           |                      |                 |                      |                 |
|--|----------------------|-----------------|----------------------|-----------------|
| Lift capacity - 6 ft platform          | 272 kg               | 600 lbs         | 227 kg               | 500 lbs         |
| Lift capacity - 8 ft platform          | 227 kg               | 500 lbs         | 227 kg               | 500 lbs         |
| Platform rotation                      | 160°                 | 160°            | 160°                 | 160°            |
| Turntable rotation                     | 360° continuous      | 360° continuous | 360° continuous      | 360° continuous |
| Turntable tailswing - axle retracted   | 1.42 m               | 4 ft 8 in       | 1.42 m               | 4 ft 8 in       |
| Turntable tailswing - axle extended    | 1.12 m               | 3 ft 8 in       | 1.12 m               | 3 ft 8 in       |
| Drive speed - stowed                   | 5.6 km/h             | 3.5 mph         | 5.6 km/h             | 3.5 mph         |
| Drive speed - raised/extended          | 1.1 km/h             | 0.68 mph        | 1.1 km/h             | 0.68 mph        |
| Gradeability** - stowed 2WD            | 30%                  | 30%             | 30%                  | 30%             |
| Gradeability** - stowed 4WD            | 45%                  | 45%             | 45%                  | 45%             |
| Turning radius - axle extended: inside | 3.25 m               | 10 ft 8 in      | 3.25 m               | 10 ft 8 in      |
| outside                                | 7.01 m               | 23 ft           | 7.01 m               | 23 ft           |
| Controls                               | 12 V DC proportional |                 | 12 V DC proportional |                 |
| Tyres - RT lug                         | 385/65 D22.5         |                 | 385/65 D22.5         |                 |

| POWER                   |  |         |         |         |
|-------------------------|--|---------|---------|---------|
| Power source            | Deutz BF4L 2011 4 cylinder diesel 78 hp (58.1 kW)<br>Perkins 804C-33 4 cylinder diesel 63 hp (50 kW) |         |         |         |
| Auxiliary power unit    | 12 V DC  | 12 V DC | 12 V DC | 12 V DC |
| Hydraulic tank capacity | 170 L  | 45 gal  | 170 L   | 45 gal  |
| Fuel tank capacity      | 125 L  | 33 gal  | 125 L   | 33 gal  |

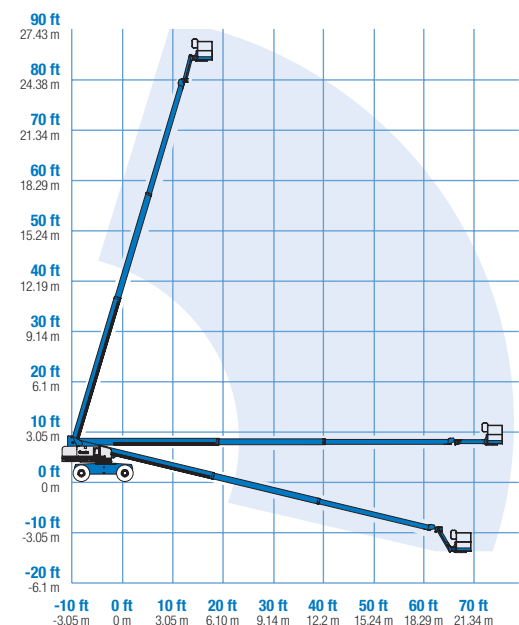
| WEIGHT*** |           |            |           |            |
|-----------|-----------|------------|-----------|------------|
| 2WD       | 15,073 kg | 33,230 lbs | 16,198 kg | 35,710 lbs |
| 4WD       | 15,141 kg | 33,380 lbs | 16,266 kg | 35,860 lbs |

| STANDARDS COMPLIANCE | CE EN280, PB-10-611-03 |
|----------------------|------------------------|
|----------------------|------------------------|

## RANGE OF MOTION S™-80



## RANGE OF MOTION S™-85



\* The metric equivalent of working height adds 2 m to platform height. U.S. adds 6 ft to platform height.

\*\* Gradeability applies to driving on slopes. See operator's manual for details regarding slope ratings.

\*\*\* Weight will vary depending on options and/or country standards.

## Features

### EASILY CONFIGURED TO MEET YOUR NEEDS

#### PLATFORM OPTIONS

- Steel 1.83 m (6 ft) (standard)
- Steel 2.44 m (8 ft)
- Steel 1.83 m or 2.44 m (6 ft or 8 ft) tri-entry

#### JIB OPTIONS

- Non-jib
- 1.52 m (5 ft) jib boom

#### ENGINE OPTIONS

- Deutz diesel 58.1 kW (78 hp)
- Perkins diesel 50 kW (63 hp)

#### DRIVE OPTIONS

- 2WD
- 4WD

#### AXLE

- Oscillating axle (standard)

#### TYRE OPTIONS

- Rough terrain, air-filled (standard)
- Rough terrain, foam-filled
- Rough terrain, non-marking

### STANDARD FEATURES

#### MEASUREMENTS

##### S™-80

- 26.40 m (86 ft) working height
- 22.07 m (72 ft 5 in) horizontal reach
- 272 kg (600 lb) lift capacity with 1.83 m (6 ft) platform
- 227 kg (500 lb) lift capacity with 2.44 m (8 ft) platform

##### S™-85

- 27.90 m (91 ft) working height
- 23.60 m (77 ft 5 in) horizontal reach
- 227 kg (500 lb) lift capacity with 1.83 m (6 ft) platform
- 227 kg (500 lb) lift capacity with 2.44 m (8 ft) platform

#### PRODUCTIVITY

- Self-leveling platform
- Hydraulic platform rotation
- Fully proportional Hall effect joystick controls
- Drive enable
- AC power to platform
- Horn
- Hour meter
- Tilt alarm
- 360° continuous turntable rotation

### STANDARD FEATURES

#### PRODUCTIVITY cont.

- Locking low profile turntable covers
- Positive traction drive
- Two speed wheel motors
- Certified load sensor

#### POWER

- All engines are emissions compliant
- 12 V DC auxiliary power
- Anti-restart engine protection
- Auto engine fault shutdown
- Deutz intake heater



### OPTIONS & ACCESSORIES

#### PRODUCTIVITY

- 340 kg (750 lb) capacity on both 1.83 m (6ft) and 2.44 m (8ft) platforms, S™-80 only
- Platform swing gate
- Half mesh platform inserts with swing gate
- Platform top auxiliary rail
- Air line to platform
- Hydraulic oil cooler
- Arctic hydraulic oil
- Arctic hoses (boom hoses only)
- Basic hostile environment kit
- Deluxe hostile environment kit
- Deluxe aircraft protection package
- Thumb rocker steer
- Tool tray
- Fluorescent tube caddy
- Pipe cradle (pair)
- Alarm package
- Panel cradle package\*
- Platform work lights
- Front driving lights
- Lockable platform control box covers
- Second battery

\* Available on select models

#### POWER

- Engine gauge package
- AC generator packages (3000 or 3500 watts)
- Cold start packages
- Diesel scrubber/spark arrestor
- Diesel spark arrestor muffler

### European Offices

#### UK

The Maltings  
Wharf Road  
Grantham NG31 6BH  
UK  
Tel: +44 (0)1476 584333  
Fax: +44 (0)1476 584334

#### France

10, ZA de la Croix St. Mathieu  
28320 Gallardon  
France  
Tel: +33 (0)2 37 26 09 99  
Fax: +33 (0)2 37 26 09 98

#### Germany

Finienweg 3  
28832 Achim/Bremen  
Germany  
Tel: +49 (0)4202 8852-0  
Fax: +49 (0)4202 8852-20

#### Spain

Gaià 31, Pol. Ind. Plà d'en Coll  
08110 Montcada i Reixac  
Barcelona  
Spain  
Tel: +34 93 572 50 90  
Fax: +34 93 572 50 91

#### Scandinavia

Tagenevägen 72  
425 37 Hisings Kärra  
Sweden  
Tel: +46 31 57 51 00  
Fax: +46 31 57 90 20

### Genie United States

18340 NE 76th Street  
P.O. Box 97030  
Redmond, Washington 98073-9730  
USA  
Tel: +1 425 881-1800  
Fax: +1 425 883-3475

**WEB:** [www.genieindustries.com](http://www.genieindustries.com)  
**Email:** [infoeurope@genieind.com](mailto:infoeurope@genieind.com)

#### Distributed By: