

Specifications

MODEL		GTH-5022R	
MEASUREMENTS		Metric	Imperial
Lifting height (max)		21.8 m	71 ft 6 in
Lifting capacity (max)		5,000 kg	11,022 lbs
Lift capacity at maximum height		2,500 kg	5,511 lbs
Lift capacity at maximum reach		200 kg	882 lbs
Forward reach (max)		18.90 m	62 ft
Reach at maximum height		4.1 m	13 ft 5 in
A Height		3.05 m	10 ft
B Height at steering wheel		2.2 m	7 ft 3 in
C Width		2.49 m	8 ft 2 in
D Inside cab width		91 cm	3 ft
E Track		2.02 m	6 ft 7 in
F Wheelbase		3.50 m	11 ft 6 in
G Length at stabilisers		6.06 m	19 ft 10 in
H Length at fork-holder plate		7.55 m	24 ft 9 in
I Ground clearance		43 cm	1 ft 5 in
L Overall width, stabilisers extended		5.15 m	16 ft 11 in
M Side rear overhang		2.87 m	9 ft 5 in
N Side front overhang		4.52 m	14 ft 10 in
O1 Obstruction angle		17°	17°
O2 Departure angle		17°	17°

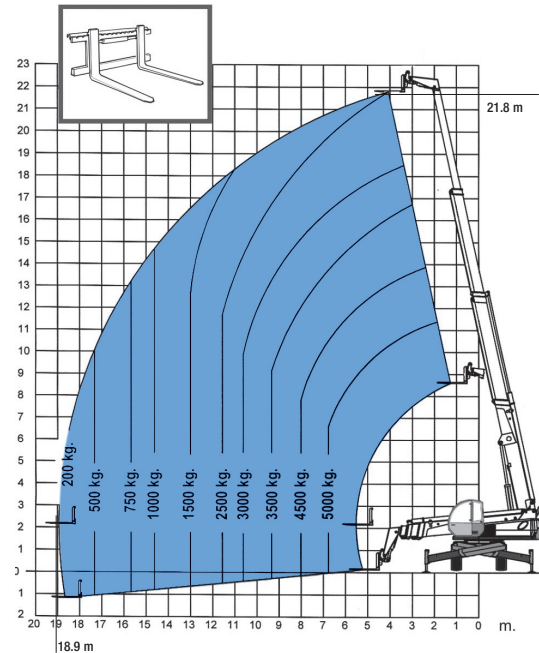
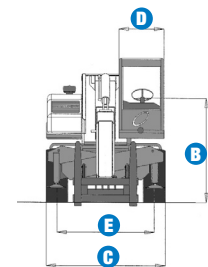
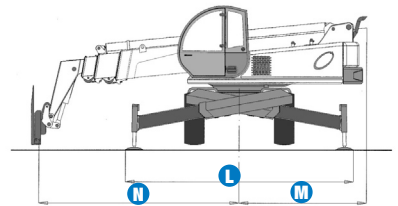
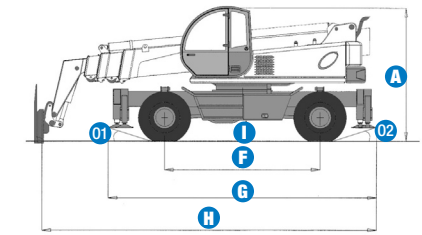
PRODUCTIVITY		
Lifting/lowering speed	30 sec./20 sec.	30 sec./20 sec.
Extension/retraction speed	43 sec./27 sec.	43 sec./27 sec.
Inside/outside turning radius	2.52 m/4.84 m	8 ft 3 in/15 ft 10 in
Break out force	8,400 kg	18,517 lbs
(with 500L shovel SAE J 732/80)		
Towing capacity at dynamometer	10,900 kg	24,028 lbs
Travel speed	30 km/h	18.6 mph
Fork-holder plate rotation	131°	131°
Chassis levelling on both axes	+/- 8°	+/- 8°
Floating forks	L 1200 mm Section 150 x 50 mm	L 3 ft 11 in Section 6 in x 2 in
Tyres (DIN 70361)	18-22.5" PR16 10holes wheel disc	

POWER		
Engine	Perkins Turbo Diesel 113.5 kW (152 HP)	
Tank capacities		
Fuel	125 L	33 gal
Engine oil	18 L	5 gal
Hydraulic oil	200 L	53 gal
Hydraulic output/pressure	130 L/min-250 bars	34 gal/min-3,626 psi

WEIGHT		
Weight*	18,900 kg	41,663 lbs

STANDARDS COMPLIANCE Operating cab conforms to ISO3471 (ROPS) and ISO3449 (FOPS)
Low emission engine conforms to UE 97/68 directives.

* Weight will vary depending on options and/or country standards



Lift capacity chart (with stabilisers)

EN1459, Annex B

Features

STANDARD FEATURES

MEASUREMENTS

- 5,000 kg (11,022 lbs) maximum lift capacity
- 21.8 m (71 ft 6 in) maximum lift height
- 18.90 m (62 ft) maximum forward reach

PRODUCTIVITY

- Four-wheel drive
- 3 steering modes:
 - front wheel steer
 - crab steer
 - coordinated steer
- Power assisted steering
- Front and rear stabilisers
- Continuous rotation
- Chassis leveling
- Two-speed mechanical gearbox
- Hydrostatic transmission
- Limited slip differential on rear axle
- Multifunction electroproportional joystick
- Hydraulic quick coupling for attachments
- Floating forks
- Attachment holder plate with hydraulic coupling
- Man-platform pre-arrangement
- Adjustable suspended seat
- Large diameter steering wheel
- Front windscreen wipers
- Front & rear lights
- Oil immersed, multi-disc, self-adjusting brakes on both axles
- Lockable fuel tank
- Longitudinal stability control system with load monitor
- Visible display with coloured LEDs
- Audible alarm
- Automatic lock-out of boom extension and lowering
- Control enable switch

POWER

- Perkins Turbo Diesel 113.5 kW (152 HP)

TYRES

- 18-22.5" PR16 10 holes wheel disc



OPTIONS & ACCESSORIES

PRODUCTIVITY

- Air conditioning
- Pre-arrangement for mixing bucket
- Pre-arrangement for Robot 8000/15000
- Centering holder boom pre-arrangements
- Second hydraulic line on boom
- Windshield protection grid
- Adjustable spotlight
- Adjustable spotlight on boom
- Wiper on cab roof
- Second joystick kit on left hand

ATTACHMENT OPTIONS

- Loading shovel 500 L
- Concrete bucket 500/800 L manual/hydraulic discharge
- Concrete mixing bucket 500 L with remote control
- Brick-holder basket
- Fixed hook on plate
- 4 m jib, 900 kg capacity
- 4 m jib with 900 kg capacity hydraulic winch
- Hydraulic winch 3000/5000 kg
- Fixed and rotating man-platforms up to 5.5 m

TYRES

- Foam-filled tyres

European Offices

UK

The Maltings
Wharf Road
Grantham NG31 6BH
UK
Tel: +44 (0)1476 584333
Fax: +44 (0)1476 584334

France

10, ZA de la Croix St. Mathieu
28320 Gallardon
France
Tel: +33 (0)2 37 26 09 99
Fax: +33 (0)2 37 26 09 98

Germany

Finienweg 3
28832 Achim/Bremen
Germany
Tel: +49 (0)4202 8852-0
Fax: +49 (0)4202 8852-25

Spain

Gaià 31, Pol. Ind. Plà d'en Coll
08110 Montcada i Reixac
Barcelona
Spain
Tel: +34 93 572 50 90
Fax: +34 93 572 50 91

Scandinavia

Tagenevägen 72
425 37 Hisings Kärra
Sweden
Tel: +46 31 57 51 00
Fax: +46 31 57 90 20

Genie United States

18340 NE 76th Street
P.O. Box 97030
Redmond, Washington 98073-9730
USA
Tel: +1 425 881-1800
Fax: +1 425 883-3475

WEB: www.genieindustries.com
Email: infoeurope@genieind.com

Distributed By: