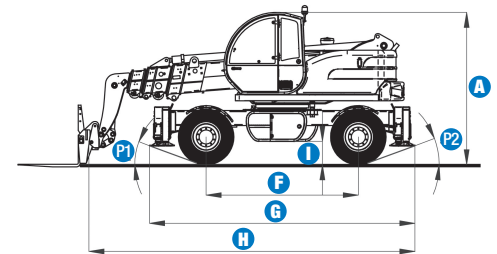
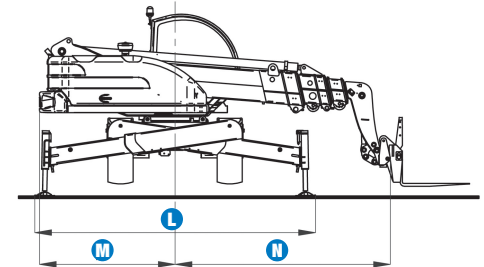
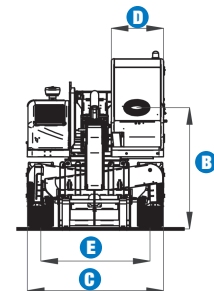


Preliminary Specifications

MODEL		GTH-4020R	
MEASUREMENTS	Metric	Imperial	
Lifting height (max)	19.64 m	64 ft 5.5 in	
Lifting capacity (max)	4,000 kg	8,817.6 lbs	
Lift capacity at maximum height	2,500 kg	5,511 lbs	
Lift capacity at maximum reach	250 kg	551 lbs	
Forward reach (max)	17.50 m	57 ft 5 in	
Reach at maximum height	4.20 m	13 ft 9.5 in	
A Height	2.93 m	9 ft 7 in	
B Height at steering wheel	2.07 m	6 ft 9.5 in	
C Width	2.48 m	8 ft 2 in	
D Inside cab width	91 cm	3 ft	
E Track	2.02 m	6 ft 7 1/2 in	
F Wheelbase	3.03 m	9 ft 11.5 in	
G Length at front wheels	5.28 m	17 ft 4 in	
H Length at fork-holder plate	7.43 m	24 ft 4.5 in	
I Ground clearance	37 cm	1 ft 2.5 in	
L Overall width, stabilisers extended	5.01 m	16 ft 5.5 in	
M Side rear overhang	2.42 m	7 ft 11 in	
N Front overhang	4.79 m	15 ft 9 in	
P1 Obstruction angle	20°	20°	
P2 Departure angle	20°	20°	



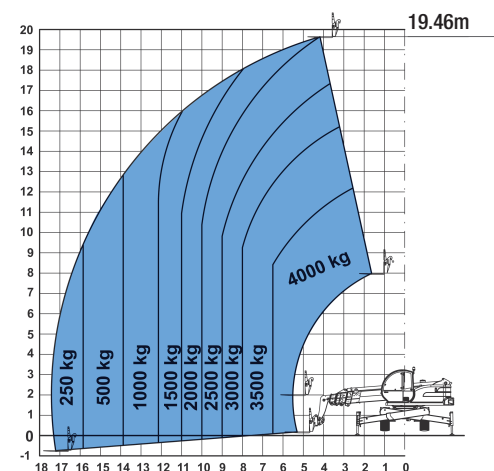
PRODUCTIVITY		
Lifting/lowering speed	15 sec./11 sec.	15 sec./11 sec.
Extension/retraction speed	29 sec./17 sec.	29 sec./17 sec.
Inside/outside turning radius	1.14 m/4.00 m	3 ft 9 in
Break-out force	7,400 kg	16,312.5 lbs
(with 800 L shovel SAE J 732/80)		
Towing capacity at dynamometer	8,000 kg	17,635 lbs
Travel speed (max)	30 km/h	18.6 mph
Fork-holder plate rotation	145°	145°
Chassis levelling on both axes	+/- 6°	+/- 6°
Floating forks	L 1,200 mm	L 3 ft 11 in
	Section 120x50mm	Section 4.5 in x 2 in
Tyres (DIN 70361)	18/19.5 PR16, 10 holes wheel disk	



POWER		
Engine	diesel 4 cylinders, 102 hp (74.9 kW)	
Tank capacities		
Petrol	145 Lt	38 gal
Engine oil	12 Lt	3 gal
Hydraulic oil	230 Lt	61 gal
Hydraulic output/pressure	100 Lt/min-250 bars	22 gal./3,625 psi

WEIGHT		
Weight*	15,200 kg	33,507 lbs

STANDARDS COMPLIANCE Operating cab conforms to ISO3471 (ROPS) and ISO3449 (FOPS)
Low emission engine conforms to UE 97/68 directives.



Lift capacity chart (with stabilisers)

EN1459, Annex B

Features

EASILY CONFIGURED TO MEET YOUR NEEDS

STANDARD FEATURES

MEASUREMENTS

- 4,000 kg (8,817.6 lbs) maximum lift capacity
- 19.64 m (64 ft 5.5 in) maximum lift height
- 17.50 m (57 ft 5 in) maximum forward reach

PRODUCTIVITY

- Four-wheel drive
- Four-wheel steer
- 3 steering modes:
 - front wheel steer
 - crab steer
 - coordinated steer
- Power assisted steering
- Hydraulic load sensing regulation
- Four hydraulic independent stabilisers
- Turret with 360° continuous rotation
- Quick coupling of tools from cab
- Left hand joystick kit
- Two-speed hydrostatic motor coupled to a two-speed mechanical gearbox
- Two electro-proportional 4x1 multi-function joystick
- Limited slip differential on front axle
- Floating forks
- Attachment holder plate with mechanical coupling
- Adjustable pneumatic seat with armrests
- Large diameter steering wheel
- Front windscreen wipers
- Front & rear lights
- Easy access to engine and components
- Display shows when the scheduled maintenance is required
- Oil immersed multi-disc brakes on both axles
- Lockable fuel tank
- 360° stability control system with:
 - Digital load monitoring display
 - Digital display monitoring of boom extension and inclination
 - Visual display with coloured LEDs
 - Audible alarm
- Longitudinal stability control system with load monitor including specific load programs according to the individual attachments used. Controls load limits for the boom, turret and stabilisers in real time.

STANDARD FEATURES cont.

- Black box records functional parameters and anomalies
- Automatic lock-out of boom extension and lowering
- Frame levelling +/- 6°
- Control enable switch

POWER

- Deutz turbo diesel 102 hp (74.9 kW)

OPTIONS & ACCESSORIES

PRODUCTIVITY

- Air conditioning
- Windshield protection grid
- Wiper on cab roof
- Adjustable spotlight on chassis or boom
- Complete radio remote control with joystick
- GPS module to record the position of machines
- Failure alarm system to transfer data from black box

ATTACHMENT OPTIONS

- FEM 3 plate and fork kit
- Fork side-shift +/- 100 mm
- FEM 3 forks kit
- 20-ton hydraulic jack with 30 mm wrench
- Fixed hook on plate
- Brick holder basket
- Manual or hydraulic concrete bucket (500 Lt or 800 Lt)
- 800 Lt loading shovel
- 500 Lt concrete mixing bucket with remote control
- 4 m jib, 900 kg capacity
- 4 m jib with 900 kg capacity hydraulic winch
- 3000 kg hydraulic winch
- Fixed and rotating man-platforms (up to 4.64 m)

TYRES

- Foam-filled tyres 18-19.5" PR16
- Spare wheel 18-19.5" PR16
- Foam-filled spare wheel 18-19.5" PR16

European Offices

UK

The Maltings
Wharf Road
Grantham NG31 6BH
UK
Tel: +44 (0)1476 584333
Fax: +44 (0)1476 584334

France

10, ZA de la Croix St. Mathieu
28320 Gallardon
France
Tel: +33 (0)2 37 26 09 99
Fax: +33 (0)2 37 26 09 98

Germany

Finienweg 3
28832 Achim/Bremen
Germany
Tel: +49 (0)4202 8852-0
Fax: +49 (0)4202 8852-25

Spain

Gaià 31, Pol. Ind. Plà d'en Coll
08110 Montcada i Reixac
Barcelona
Spain
Tel: +34 93 572 50 90
Fax: +34 93 572 50 91

Scandinavia

Tagenevägen 72
425 37 Hisings Kärra
Sweden
Tel: +46 31 57 51 00
Fax: +46 31 57 90 20

Genie United States

18340 NE 76th Street
P.O. Box 97030
Redmond, Washington 98073-9730
USA
Tel: +1 425 881-1800
Fax: +1 425 883-3475

WEB: www.genieindustries.com
Email: infoeurope@genieind.com

Distributed By: