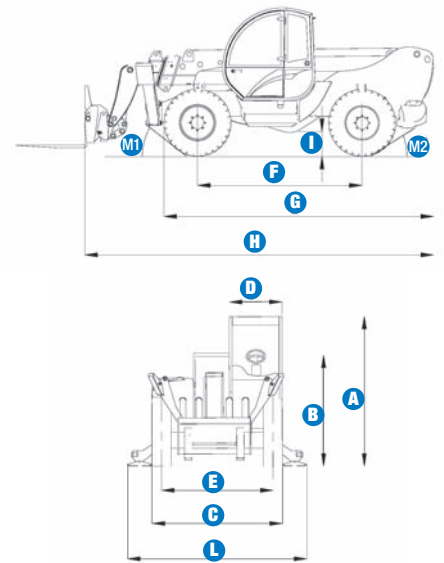


## Specifications

MODEL		GTH-4013	
MEASUREMENTS	Metric	Imperial	
Lifting height (max)	13.00 m	42 ft 8 in	
Lifting capacity (max)	4,000 kg	8,817.6 lbs	
Lift capacity at maximum height	3,000 kg	6,613 lbs	
Lift capacity at maximum reach	1,250 kg	2,755.5 lbs	
Forward reach (max)	9.08 m	27 ft 9.5 in	
Reach at maximum height	0.65 m	2 ft 1.5 in	
<b>A</b> Height	2.42 m	7 ft 11.5 in	
<b>B</b> Height at steering wheel	1.60 m	5 ft 3 in	
<b>C</b> Width	2.33 m	7 ft 7.5 in	
<b>D</b> Inside cab width	91 cm	3 ft	
<b>E</b> Track	1.92 m	6 ft 3.5 in	
<b>F</b> Wheelbase	2.95 m	9 ft 8 in	
<b>G</b> Length at front wheels	4.83 m	15 ft 10 in	
<b>H</b> Length at fork-holder plate	6.10 m	20 ft	
<b>I</b> Ground clearance	43 cm	1 ft 5 in	
<b>L</b> Overall width, stabilisers extended	2.89 m	16 ft 6 in	
<b>M1</b> Obstruction angle	38°	38°	
<b>M2</b> Departure angle	46°	46°	



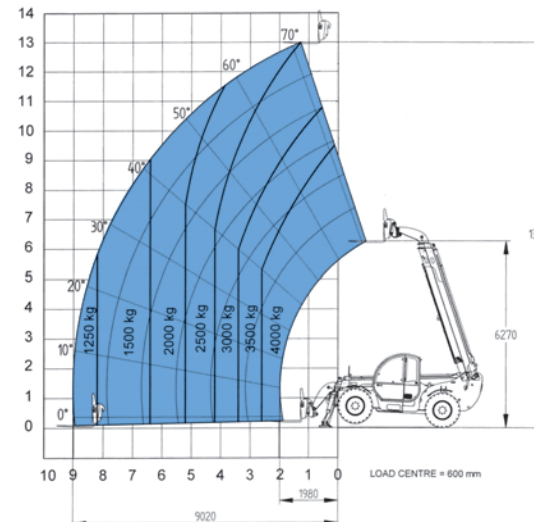
PRODUCTIVITY		
Inside/outside turning radius	1.14 m/3.79 m	3 ft 9 in/ 12 ft 5 in
Break-out force (with 800 L shovel SAE J 732/80)	5,000 kg	11,022 lbs
Towing capacity at dynamometer	8,300 kg	18,296.5 lbs
Travel speed (max)	35 km/h	21.7 mph
Fork-holder plate rotation	138°	138°
Chassis levelling on front axle	+/- 6°	+/- 6°
Floating forks	L 1,200 mm Section 120x50mm	L 3 ft 11 in Section 4.5 in x 2 in
Tyres (DIN 70361)	405/70 20" PR14 8 holes wheel rim	

POWER		
Engine	Cummins Turbo diesel 99 hp (74 kw)	
Tank capacities		
Petrol	150 Lt	40 gal
Engine oil	12 Lt	3 gal
Hydraulic oil	135 Lt	36 gal
Hydraulic output/pressure	95 Lt/min-270 bars	20.9 gal./3,916 psi

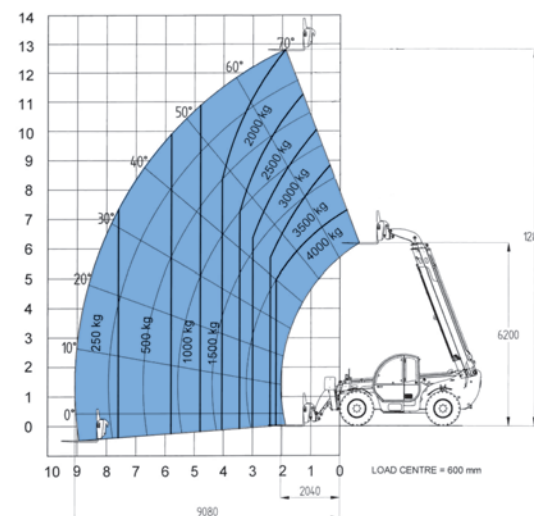
WEIGHT		
Weight*	9,820 kg	21,647 lbs

**STANDARDS COMPLIANCE** Operating cab conforms to ISO3471 (ROPS) and ISO3449 (FOPS)  
Low emission engine conforms to UE 97/68 directives.

\* Weight will vary depending on options and/or country standards



Lift capacity chart (with stabilisers)



Lift capacity chart (without stabilisers)

EN1459, Annex B

# Features

## EASILY CONFIGURED TO MEET YOUR NEEDS

### STANDARD FEATURES

#### MEASUREMENTS

- 4,000 kg (8,817.6 lbs) maximum lift capacity
- 13 m (42 ft 8 in) maximum lift height
- 9.08 m (27 ft 9 1/2 in) maximum forward reach

#### PRODUCTIVITY

- Four-wheel drive
- 3 steering modes:
  - front wheel steer
  - crab steer
  - coordinated steer
- Power assisted steering
- Front hydraulic stabilisers
- Quick coupling of tools from cab
- Two-speed hydrostatic motor coupled to a two-speed mechanical gearbox
- Electro-proportional 4x1 joystick
- Limited slip differential on front axle
- Floating forks
- Attachment holder plate with mechanical coupling
- Adjustable pneumatic seat
- Large diameter steering wheel
- Front windscreen wipers
- Front & rear lights
- Side-mounted engine for easy access to components
- Oil immersed multi-disc brakes on both axles
- Lockable fuel tank
- Longitudinal stability control system with load monitor including specific load programs according to the individual attachments used
- Visible display with coloured LEDs
- Audible alarm
- Automatic lock-out of boom extension and lowering
- Lock-out of stabilisers and chassis levelling with boom raised
- Frame levelling +/- 6°
- Automatic lock-out of oscillating rear axle
- Control enable switch

#### POWER

- Cummins turbo diesel 99 hp (74 kW)

### OPTIONS & ACCESSORIES

#### PRODUCTIVITY

- Air conditioning
- Windshield protection grid
- Wiper on cab roof

#### ATTACHMENT OPTIONS

- Forks side-shift (+/- 100 mm)
- Fixed hook on plate
- Brick-holder basket
- 500 Lt/800 Lt concrete bucket, manual discharge
- 500 Lt/800 Lt concrete bucket, hydraulic discharge
- 4 m jib, 900 kg capacity
- 3000 kg hydraulic winch
- Pre-arrangement for man-platform
- Fixed or rotating man-platform (max. 4.64 m)
- 2nd hydraulic line

#### TYRES

- Foam-filled tyres

### European Offices

#### UK

The Maltings  
Wharf Road  
Grantham NG31 6BH  
UK  
Tel: +44 (0)1476 584333  
Fax: +44 (0)1476 584334

#### France

10, ZA de la Croix St. Mathieu  
28320 Gallardon  
France  
Tel: +33 (0)2 37 26 09 99  
Fax: +33 (0)2 37 26 09 98

#### Germany

Finienweg 3  
28832 Achim/Bremen  
Germany  
Tel: +49 (0)4202 8852-0  
Fax: +49 (0)4202 8852-25

#### Spain

Gaià 31, Pol. Ind. Plà d'en Coll  
08110 Montcada i Reixac  
Barcelona  
Spain  
Tel: +34 93 572 50 90  
Fax: +34 93 572 50 91

#### Scandinavia

Tagenevägen 72  
425 37 Hisings Kärna  
Sweden  
Tel: +46 31 57 51 00  
Fax: +46 31 57 90 20

### Genie United States

18340 NE 76th Street  
P.O. Box 97030  
Redmond, Washington 98073-9730  
USA  
Tel: +1 425 881-1800  
Fax: +1 425 883-3475

**WEB:** [www.genieindustries.com](http://www.genieindustries.com)  
**Email:** [infoeurope@genieind.com](mailto:infoeurope@genieind.com)

#### Distributed By: